



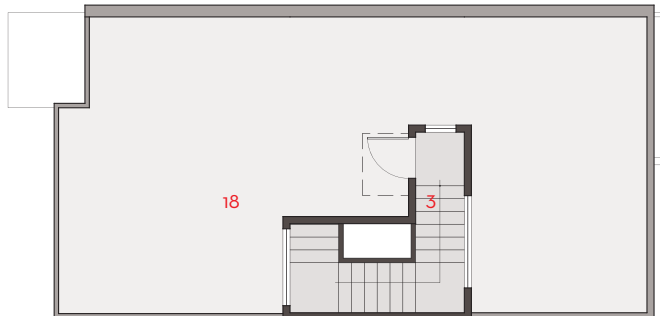
5153 42ND AVENUE S
SEATTLE, WA 98108

MODEL A UNIT 1.1

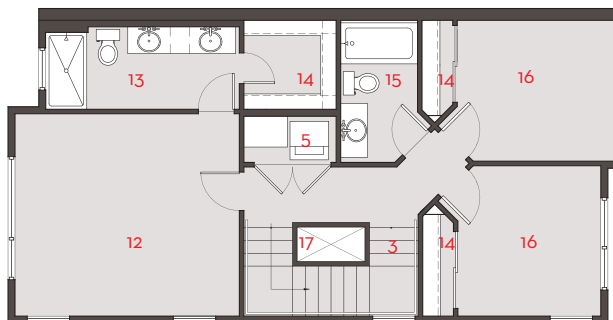
3 BED / 2.5 BATH
2080 LIVING SQ FT
2282 TOTAL SQ FT

- 1. 2 CAR GARAGE
- 2. FLEX SPACE
- 3. STAIR
- 4. DECK
- 5. GREAT ROOM
- 6. KITCHEN
- 7. DINING ROOM
- 8. STOOP
- 9. ENTRY
- 10. COAT CLOSET
- 11. POWDER ROOM
- 12. MASTER BEDROOM
- 13. MASTER BATHROOM
- 14. CLOSET
- 15. BATHROOM
- 16. BEDROOM
- 17. OPEN TO BELOW
- 18. ROOF DECK

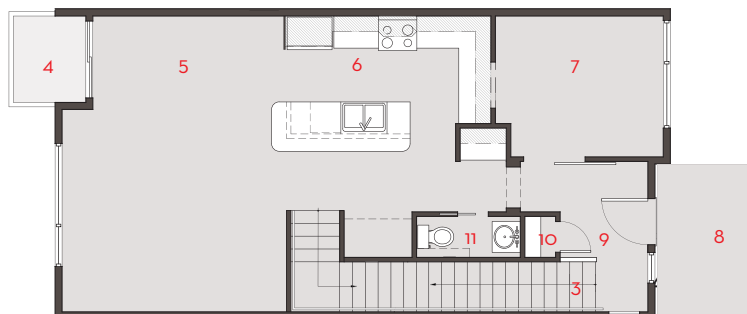
COMING SOON!



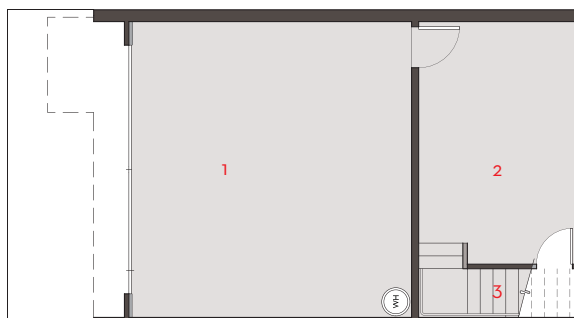
FLOOR PLAN LEVEL 4



FLOOR PLAN LEVEL 3



FLOOR PLAN LEVEL 2



FLOOR PLAN LEVEL 1